

# THERMOGRAPHIC REPORT

Company | GS Marketing  
 Problem # | 6

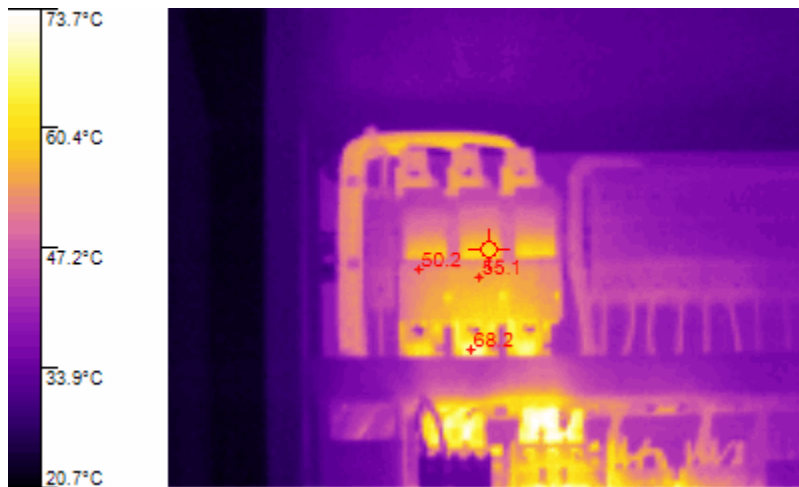
## IDENTIFICATION

Location Name | Loading Bay Platform  
 Equipment | Twin Fan Evap EF46

## PROBLEM DESCRIPTION

Raised temp across circuit F4 all phases

## THERMOGRAM



## TEMPERATURE MEASUREMENTS

Image Date	15/09/2005 10:52:37
Target Temperature	58.9 °C
Emissivity	0.80
Reflected Temp	OFF

## WEATHER

Air Temp	22.9
Sky	-
Wind Speed	-
From	-

Distance	Rated Load	Meas. Load	% Load
1m			

## MAINTENANCE ACTION

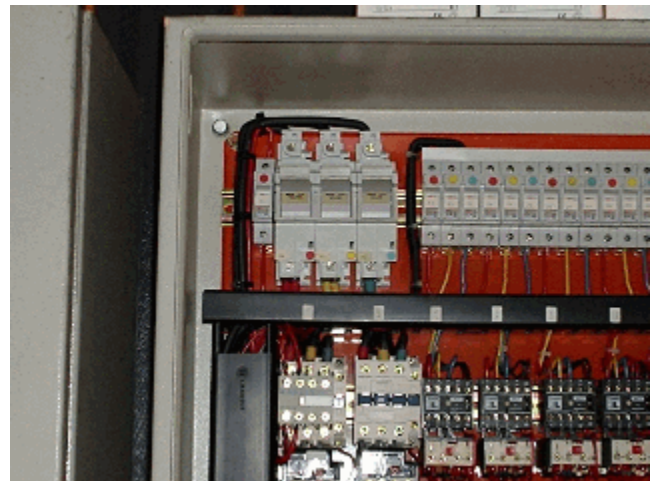
Description	Repaired by

## REPAIR PRIORITY

Subj. Rating	
Temp. Rating	

## REINSPECTION

Reinspected by	
Date	



## Comments

Temp may be due to load but could also indicate upgrade requirement.